



Light

FITZ S1

Breathable, lightweight and low-cut S1 safety shoe

Fitz is one of the most breathable safety shoes that you can put on your feet, specifically designed to ensure long-lasting comfort in hot working conditions.

Upper	Knitted Textile
Lining	Mesh
Footbed	SJ foam footbed
Midsole	N/A
Outsole	BASF PU/ BASF PU
Toecap	Steel
Category	S1 SRC
Size range	EU 35-47 / UK 3.0-12.0 / US 3.0-13.0 JPN 21.5-31.0 / KOR 230-310
Sample weight	0.595 kg
Norms	ASTM F2413:2018 EN ISO 20345:2011 BIS 15298 (Part 2) : 2016



BLK



Oil & fuel resistant

The outsole is resistant against oil and fuel.



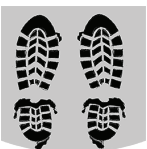
Breathable upper

Increased moisture and temperature management for extended wearer comfort.



Steel toecap

Robust metal support to protect the feet of the wearer against falling or rolling objects.



Self-cleaning outsole

Self-cleaning outsoles are designed to reduce clogging of the profile.



Slip resistance (SR)

Replaces the previously used term of SRA+SRB=SRC. SR means the slip test has been executed on tiles contaminated with soap and with oil.

Industries:

Automotive, Construction, Industry, Logistics

Environments:

Dry environment

Maintenance instructions:

To extend the life of your shoes, we recommend to clean them regularly and to protect them with adequate products. Do not dry your shoes on a radiator, nor nearby a heat source.

	Description	Measure unit	Result	EN ISO 20345
Upper	Knitted Textile			
	Upper: permeability to water vapor	mg/cm²/h	37	≥ 0.8
	Upper: water vapor coefficient	mg/cm²	88	≥ 15
Lining	Mesh			
	Lining: permeability to water vapor	mg/cm²/h	54	≥ 2
	Lining: water vapor coefficient	mg/cm²	288	≥ 20
Footbed	SJ foam footbed			
	Footbed: abrasion resistance (dry/wet) (cycles)	cycles	25600/12800	25600/12800
Outsole	BASF PU/ BASF PU			
	Outsole abrasion resistance (volume loss)	mm³	91	Class II Shoe&Density <=0.9g/cm³, <=250mm³; Density >0.9g/cm³, <=150mm³
	Outsole slip resistance SRA: heel	friction	0.47	≥ 0.28
	Outsole slip resistance SRA: flat	friction	0.51	≥ 0.32
	Outsole slip resistance SRB: heel	friction	0.20	≥ 0.13
	Outsole slip resistance SRB: flat	friction	0.24	≥ 0.18
	Antistatic value	MegaOhm	408	0.1 - 1000
	ESD value	MegaOhm	N/A	≤ 100
	Heel energy absorption	J	29	≥ 20
Toecap	Steel			
	Impact resistance toecap (clearance after impact 200J)	mm	17.5	≥ 14
	Compression resistance toecap (clearance after compression 15kN)	mm	19	≥ 14

Sample size: 42

Our shoes are constantly evolving, the technical data above may change. All product names and brand Safety Jogger, are registered and may not be used or reproduced in any format, without written consent from us.



Solutions for every workplace

INDUSTRIAL PROFESSIONAL TACTICAL TIGER GRIP



www.safetyjogger.com